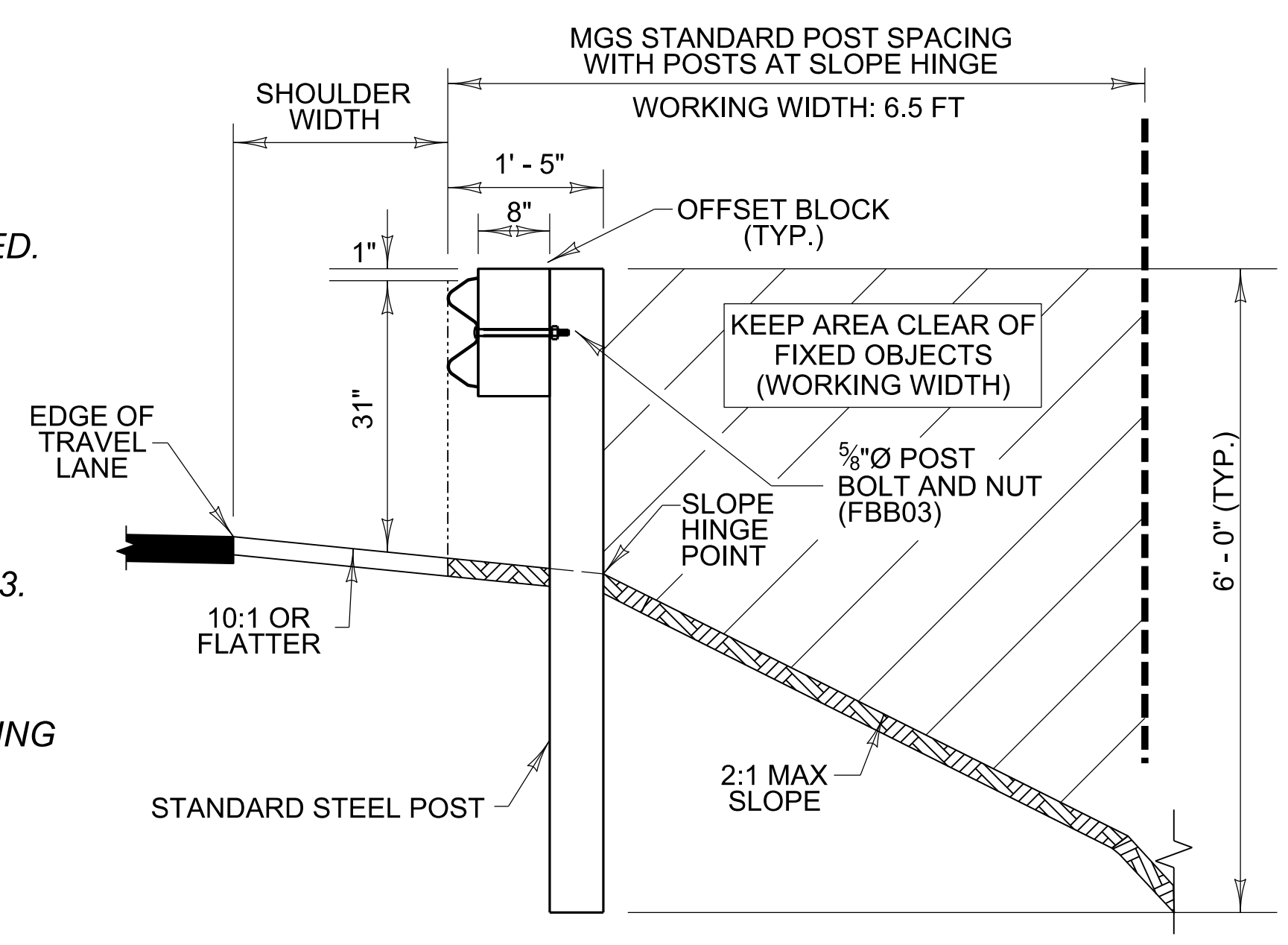


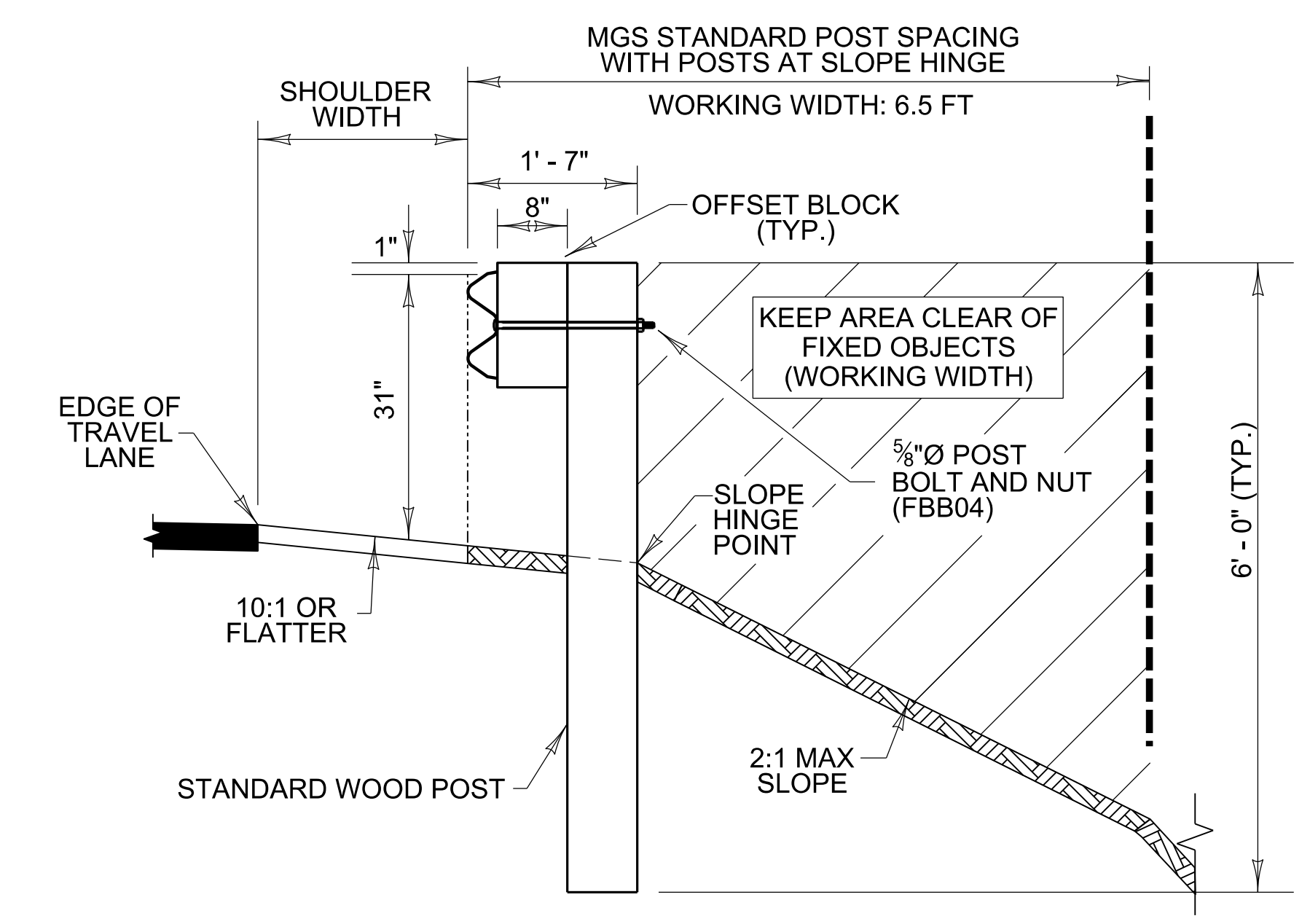
MGS GUARDRAIL AT SLOPE HINGE ON REDUCED SHOULDER WIDTH (PLAN)

~ NOTES ~

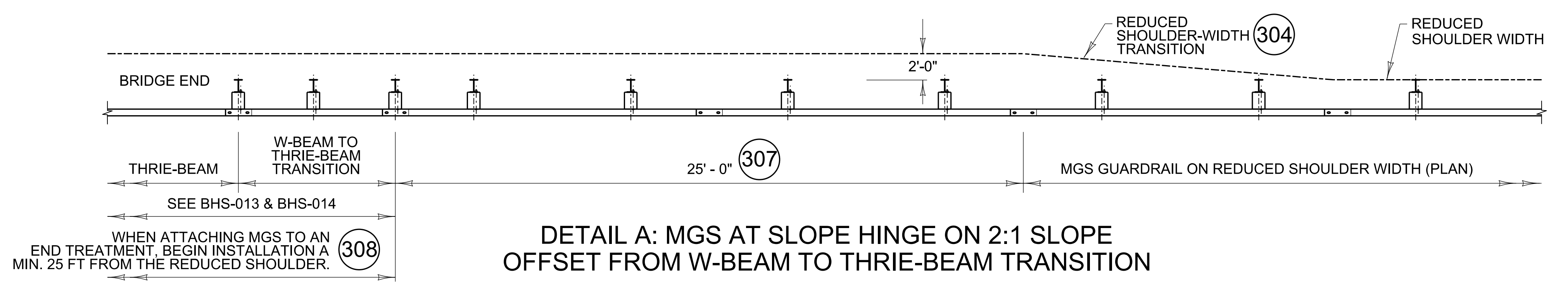
- 301. THIS MGS GUARDRAIL SYSTEM HAS BEEN CRASH TESTED AND IS MASH TL-3 APPROVED.
- 302. THIS MGS GUARDRAIL SYSTEM — STANDARD MGS AT THE SLOPE HINGE ON REDUCED SHOULDER WIDTH — HAS A WORKING WIDTH OF APPROX. 6.5 FT. DO NOT INSTALL WHERE FIXED OBJECTS ARE LOCATED WITHIN 6.5 FT OF THE FACE OF GUARDRAIL (SEE PLAN VIEW).
- 303. THE FOLLOWING STANDARD MGS GUARDRAIL INSTALLATION NOTES APPLY TO MGS SYSTEMS INSTALLED AT THE SLOPE HINGE ON REDUCED SHOULDER-WIDTH: RBR-200, SHEET 1, NOTES 103, 104, 105, 106, 107, 109, 111, 112, & 113.
- 304. TRANSITION THE GRADED AREA BEHIND GUARDRAIL POSTS FROM NORMAL WIDTH (2 FT BEHIND GUARDRAIL POST) TO REDUCED SHOULDER WIDTH (0 FT BEHIND GUARDRAIL POST) OVER A MINIMUM 12.5 FT LENGTH. CONTRARY TO RGX-001, ROUNDING OF SLOPES IS NOT PERMITTED AT THE HINGE POINT BEHIND GUARDRAIL.
- 305. GUARDRAIL HEIGHT SHALL BE 31" ALONG REDUCED SHOULDER WIDTH AND THROUGH THE REDUCED SHOULDER-WIDTH TRANSITIONS. SEE STANDARD DRAWING RBR-018 WHEN TRANSITIONING TO A HEIGHT LESS THAN 31".
- 306. THE FOLLOWING GUARDRAIL CONFIGURATIONS SHALL NOT BE USED WITH THIS MGS GUARDRAIL SYSTEM (6'-0" STEEL POSTS ON A 2:1 SLOPE INSTALLED AT THE SLOPE HINGE POINT):
 - GUARDRAIL WITH HALF- OR QUARTER-POST SPACING (RBR-200 SHEET 2)
 - TL-2 GUARDRAIL (RBR-201)
 - OMITTED POSTS (RBR-200 SHEETS 6, 7, & 8)
 - LONG-SPAN GUARDRAIL (RBR-200 SHEET 9 & 10)
 - GUARDRAIL WITH CURBING (RBR-205)
- 307. WHEN USING GUARDRAIL WITH POSTS PLACED AT THE SLOPE POINT AND TRANSITIONING TO A THRIE-BEAM, LOCATE THE ASYMMETRIC W-BEAM TO THRIE-BEAM TRANSITION RAIL A MINIMUM OF 25 FT FROM THE REDUCED SHOULDER-WIDTH TRANSITION. SEE DETAIL A.
- 308. END TREATMENTS AND CRASH CUSHIONS REQUIRE SPECIFIC GRADING CONDITIONS TO FUNCTION PROPERLY. CONSULT THE MANUFACTURER'S INSTALLATION MANUAL WHEN INSTALLING PROPRIETARY SYSTEMS NEAR SLOPES. LOCATE STANDARD TERMINALS A MINIMUM OF 25 FT FROM THE REDUCED SHOULDER WIDTH. REFER TO DETAIL A FOR GENERAL LAYOUT.



SECTION A - A
 STANDARD STEEL POST AT SLOPE HINGE
 WITH REDUCED SHOULDER WIDTH



SECTION A - A
 STANDARD WOOD POST AT SLOPE HINGE
 WITH REDUCED SHOULDER WIDTH



DETAIL A: MGS AT SLOPE HINGE ON 2:1 SLOPE
 OFFSET FROM W-BEAM TO THRIE-BEAM TRANSITION

BID ITEM AND UNIT TO BID
 G/R-W BEAM-S FACE TL-3 LF